



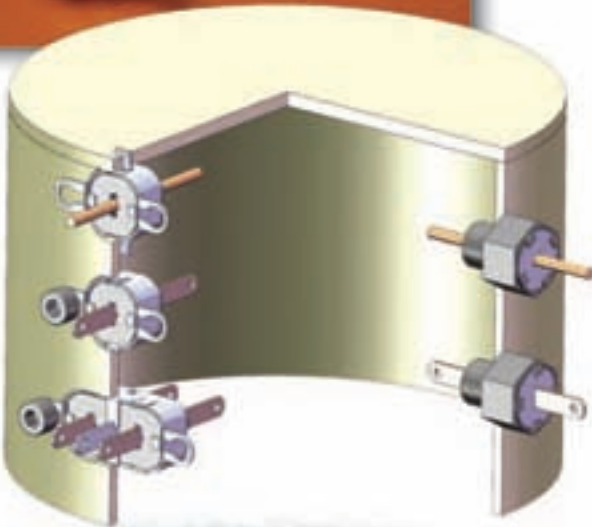
Motor Line Feed-Through (MLFT) Filters *patent pending*



Innovative approach delivers flexible, low cost EMI solution



Spectrum Advanced Specialty Products, the established world leader in EMC, has developed a new family of high capacitance filters designed for various DC motor applications in high volume automotive, medical, industrial and telecommunications markets. The Motor Line Feed-Through (MLFT) filter is a one-component solution that eliminates the need for multiple capacitors, inductive coils, leads and PCB assemblies requiring numerous electrical connections and large amounts of space. MLFT filters (patent pending) are engineered to provide the required EMI filtering and mechanical interface at a reduced cost.



MLFT filters offer significant insertion loss to pass global conductive and radiated EMC tests, such as CISPR 25. Our standard line of filters can be designed into mechanical packages for easy retrofit into existing designs or as custom assemblies to simplify installation during production. These filters are available in stamped or threaded housings, with single or dual lines, and round leads or Faston terminals for applications to 100 volts (consult factory for higher voltages).

MLFT Benefits

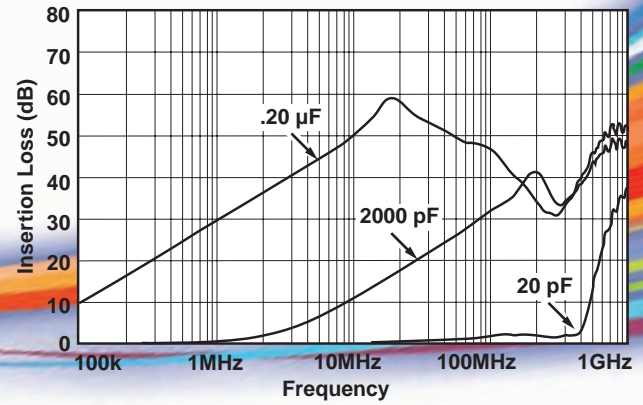
- Easy installation, provides a connector interface
- Excellent EMI filtering through GHz range
- Competitive cost
- Space saving EMI solution
- Fewer electrical connections
- Failsafe DC open circuit for safety concerns
- Custom filtering and mechanical packages available
- Transient voltage suppression



Motor Line Feed-Through (MLFT) Filters

patent pending

Typical Insertion Loss



Ordering Information

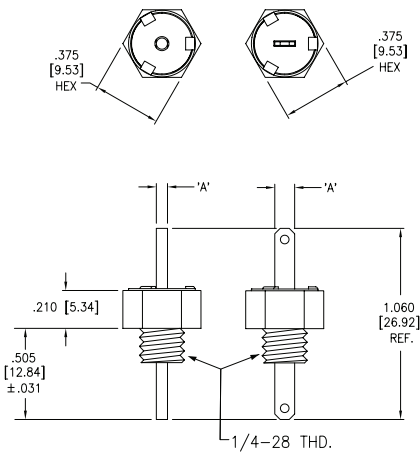
Example: **MLFT2-001-TFCAC**

The part number shown represents a single line, threaded MLFT Filter with Faston Terminals, a capacitance rating of 0.20 µF and a voltage rating of 100V.

MLFT2	-	001	-	T		F		CA		C
Motor Line Feed-Through Filter		Style		Terminal		Capacitance		Voltage Rating		
		T = Single line threaded S = Single line stamped D = Dual line stamped		R = .062 round lead F = .110 Faston		CA = .20 µF CC = 2000 pF CD = 20 pF		C = 100V		

NOTE: Current rating 25 Amps

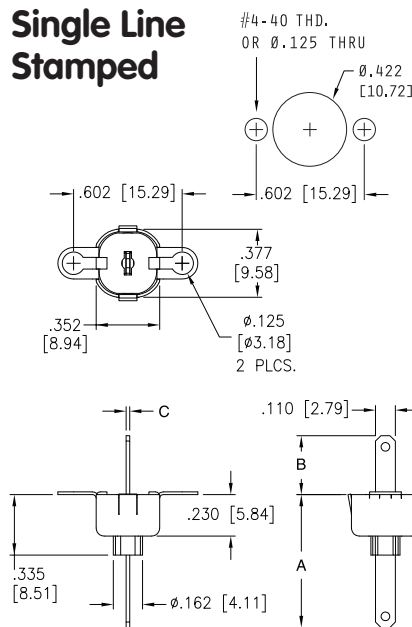
Single Line Threaded



Dimensions Per Termination

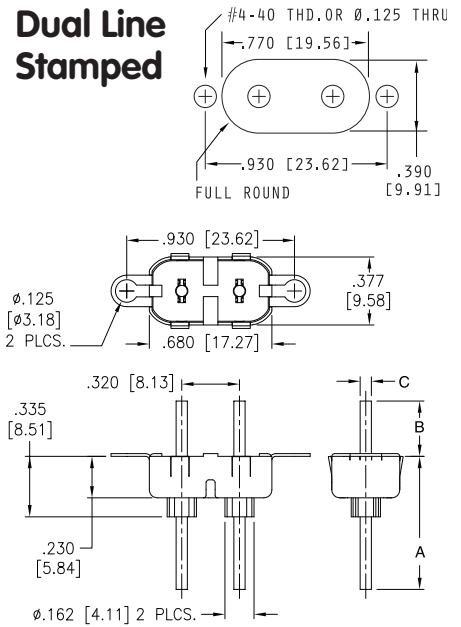
	A
.062 Round Lead	.062 (1.57)
.110 Faston	.110 (2.79)

Single Line Stamped



	A	B	C
.062 Round Lead	.765 (19.43)	.295 (7.49)	.062 (1.57)
.110 Faston	.740 (18.79)	.320 (8.13)	.020 (0.51)

Dual Line Stamped



	A	B	C
.062 Round Lead	.765 (19.43)	.295 (7.49)	.062 (1.57)
.110 Faston	.740 (18.79)	.320 (8.13)	.020 (0.51)



Check out the New high capacitance EMI Solution for lower voltage applications, call 888-267-1195 or visit www.specemc.com/MLFT

8061 Avonia Road • Fairview, Pennsylvania 16415 • Phone: 814-474-1571 • Fax: 814-474-3110